

OUTER IMPACT™

Required tools:

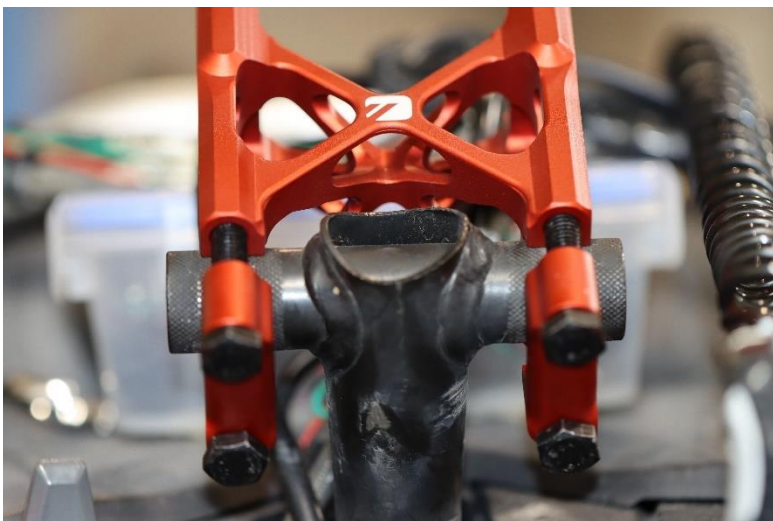
1 - 13mm Wrench

1 – 5mm Allen Wrench

- Disassemble the OEM riser by using the 5mm Allen wrench to remove the 4 bolts on the top cap. Use the 13mm wrench to remove the bottom clamp(s).



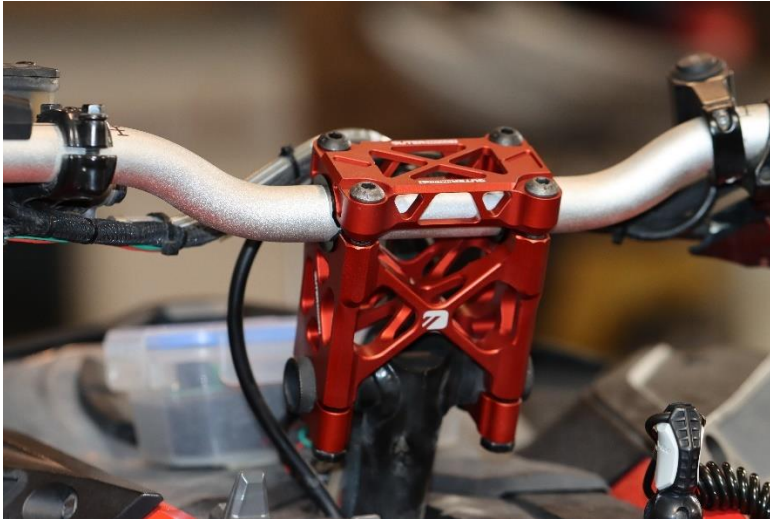
- You may need to tilt the riser forward to install the clamps and bolts, depending on clearance requirements. The clamps have an interior contour, the outside of the riser is flat.



- When tightening the clamps, align the position of the riser to follow the same angle as the steering post. Then place the bottom bushing in place (if needed) before laying the handlebar in place. Place the top bushing in place and tighten the cap slightly.



- Secure the handlebar with the 4 bolts in the cap using the 5mm Allen wrench.



- Rotate handlebars to desired angle and align using the indicators on the cap prior to tightening completely.



- Tighten bolts completely and admire your work.

